

POSHTECH

VERTICAL MACHINING CENTER



Registration Number
0463



JEOU YANG MACHINERY

POSHTECH-JM 450

| Model | | JM 450 | |
|--|-------|----------------|-------------|
| Table | | | |
| Table size (X/Y) | mm | 550x350 | 22x14in |
| T-slot (size*number) | | 14x100x3 | .5x4x.1in |
| Max. table loading | kg | 150 | 330lbs |
| Travel | | | |
| Longitudinal travel (X) | mm | 450 | 17.7in |
| Cross travel (Y) | mm | 350 | 13.8in |
| Headstock travel (Z) | mm | 350 | 13.8in |
| Distance of spindle nose to table surface | mm | 100-450 | 4-18in |
| Distance of spindle center to Z-axis cover | mm | 325 | 12.8in |
| Spindle | | | |
| Spindle taper | | BT30 | |
| Spindle speed (standard) | rpm | 10000 or 12000 | |
| Feed | | | |
| Rapid travel | M/min | 30/30/30 | 1,180in/min |
| Min. input increment | mm | 0.001 | .0001in |
| ATC | | | |
| Tool holder | | BT30 | |
| Tool storage capacity | pcs | 10 Armless | |
| Max. tool diameter | mm | 63 | 2.5in |
| Max. tool length | mm | 150 | 5.9in |
| Max. tool weight | kg | 3 | 6.6lbs |
| Tool change time | | 6 sec | |
| Motor | | | |
| Spindle motor | | 3.7/5.5kw | 7.5Hp |
| X servo motor | kw | 1.0 | 1.3Hp |
| Y servo motor | kw | 1.0 | 1.3Hp |
| Z servo motor | kw | 1.0 with Brake | 1.3Hp |
| Lub. motor | w | 105/125 | |
| Coolant pump | HP | 1/2 & 1/4 hp | |
| Machine weight and space | | | |
| Floor space | mm | 1690x1960x2070 | 66x82x81in |
| Net weight | kg | 2000 | 4413lbs |

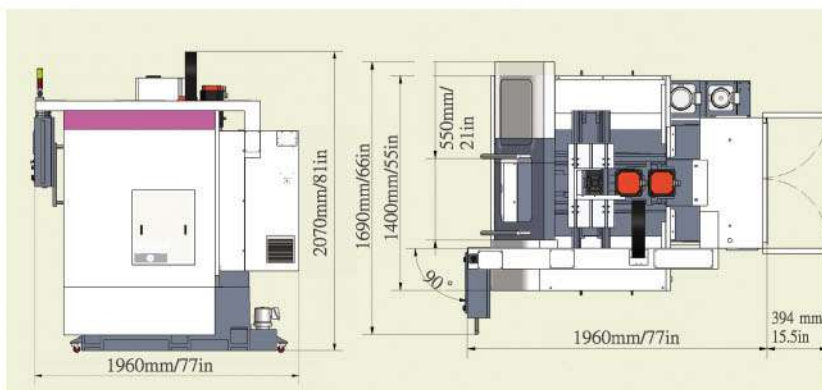
* Specifications are subject to change without notice.

Standard Accessories:

- Massive cast-iron construction
- 10000 (Fanuc) or 12000 rpm spindle speed
- Direct-coupled servo motors
- Full splash safety guard
- Air cooling system
- Spindle air blast
- Spindle air blower
- Auto lubrication system
- Cycle end alarm light
- Halogen work lamp
- Leveling Bolts and pads
- Toolkit box
- Operation & Maintenance Manual

Optional Accessories

- 15000 rpm direct drive spindle
- 24000 rpm built-in spindle (ISO 30) or 30000 rpm (ISO 25)
- **Coolant Through Spindle** Pump 4Bar., 20L/min, 300L SubTank
- Oil chiller for spindle
- Chip auger
- **Auto Pallet Changer**
- CNC Rotary table (4 Axis or 5 Axis)
- **Auto Tool Length Measurement**
- 20 tool Arm-type **ATC** (1.5 sec) (#30 Taper Only)
- BT-40 Armless 10 Tools
- High column 100mm or 150mm



JEOU YANG MACHINERY CO., LTD

NO. 197, MIN-SHENG ST., TAN-TZU
TAICHUNG, TAIWAN, ROC.

TEL: +886-4-2537-0971

FAX: +886-4-2537-0984

E-mail: poshtech@ms36.hinet.net

web: www.poshtech.com.tw